

Equipment & Solutions for access control



A European specialist in locking systems and equipment

- SECURIDEV is a european independant industrial group, specialised in the development of locks, locking systems and access control systems
- 11 companies in France and Europe
- 1 643 employees
- Turnover: 145M€
- **Listed on the french stock market (Paris)**

A European specialist in locking systems and equipment



dēny®
F O N T A I N E

dēny®
F O N T A I N E

SÉCURiDEV

DENY FONTAINE: *A historical firm*

1740 : Foundation of FONTAINE.

1884 : Charles DENY imagines the principle safety locks activated by a system of prioritized keys, functioning on sub master and master keys.

1891 : Foundation of DENY, next to Abbeville, in the heart of “Vimeu” region, birthplace of French locksmiths since Louis XIV.

1900 : FONTAINE requires prestigious artists to design exclusive models for luxury locksmiths. Puiforcat, Ruhlmann, Bourdelle, Maillol and others, revolutionize the interior decoration at that time

1947 : DENY finalizes a system of electromagnetically lock

1994 : DENY enters in the Sécuridev group

2002 : Merger of DENY and FONTAINE to form DENY FONTAINE SAS.

DENY FONTAINE *it's*

- 156 employees
- 22M € turnover
- A production site of 3 800 m², located at Saint-Blimont, in the “Vimeu” region, birthplace of locksmiths
- B to B distribution
- A training centre with personalized sessions
- ISO 9001 & ISO 14001 certified
- A permanent quality policy

DENY FONTAINE :

The global solution for all accesses !

DENY FONTAINE designs, develops and produces complete products and system ranges

The best technological portfolio in the market :

- **A wide and unique range** patented cylinders, mechanical or electronic, round or European profile, flat or reversible keys...to make all types of masterkey systems with high degree of combinations ...
- **Mechanical, electric et electronic lockcases**, single or multipoint, round or hook bolts
- **Autonomous or on-line badge readers**, chip, magnetic or proximity technologies
- **Systems of certified emergency exits management**, motorized electric bolts, electromagnetic lockings...

DENY FONTAINE :

A specific solution to all your projects!

- Products are **conceived and developed** by our engineering team.
- **Experience** in all areas and technologies of access control.
- **Products produced and assembled** in our production site.
- A **real engineering ability** to suit to personalized answer
- Products validated by **reliability and durability tests** realized on sites or in laboratories by official bodies.

Our branches of industry



Administration: Town Councils, Ministries, Embassies, Prefectures, Penal Establishments



Banks & Insurances: Banque de France, Caisse d'épargne, BNP, Crédit Agricole...



Commerce & Industry: Renault, Peugeot, Citroën, Christian Dior, Dassault, Givenchy



Energy: EDF, GDF, Energies Solaires, Centrales Nucléaires...



Buildings receiving public: Château de Versailles, Palais Royal, Palais de Monaco,
Palais de l'Elysée

Our branches of industry



Healthcare: CHU-CHR Lille, CHS St Gemmes, Pau, CHR St Etienne, CHR Rouffach ...



Transport: SNCF, RATP, Aéroports de Paris, Aéroports d'Alger, de Nice, de Bordeaux ...



Education: Universities, High Schools



Hotel: Disneyland Paris, Le Ritz, George V, Le Crillon, Sofitel, Mercure, Fouquet's...



Tele-communication: France Telecom, SFR, Orange, Bouygues, TDF

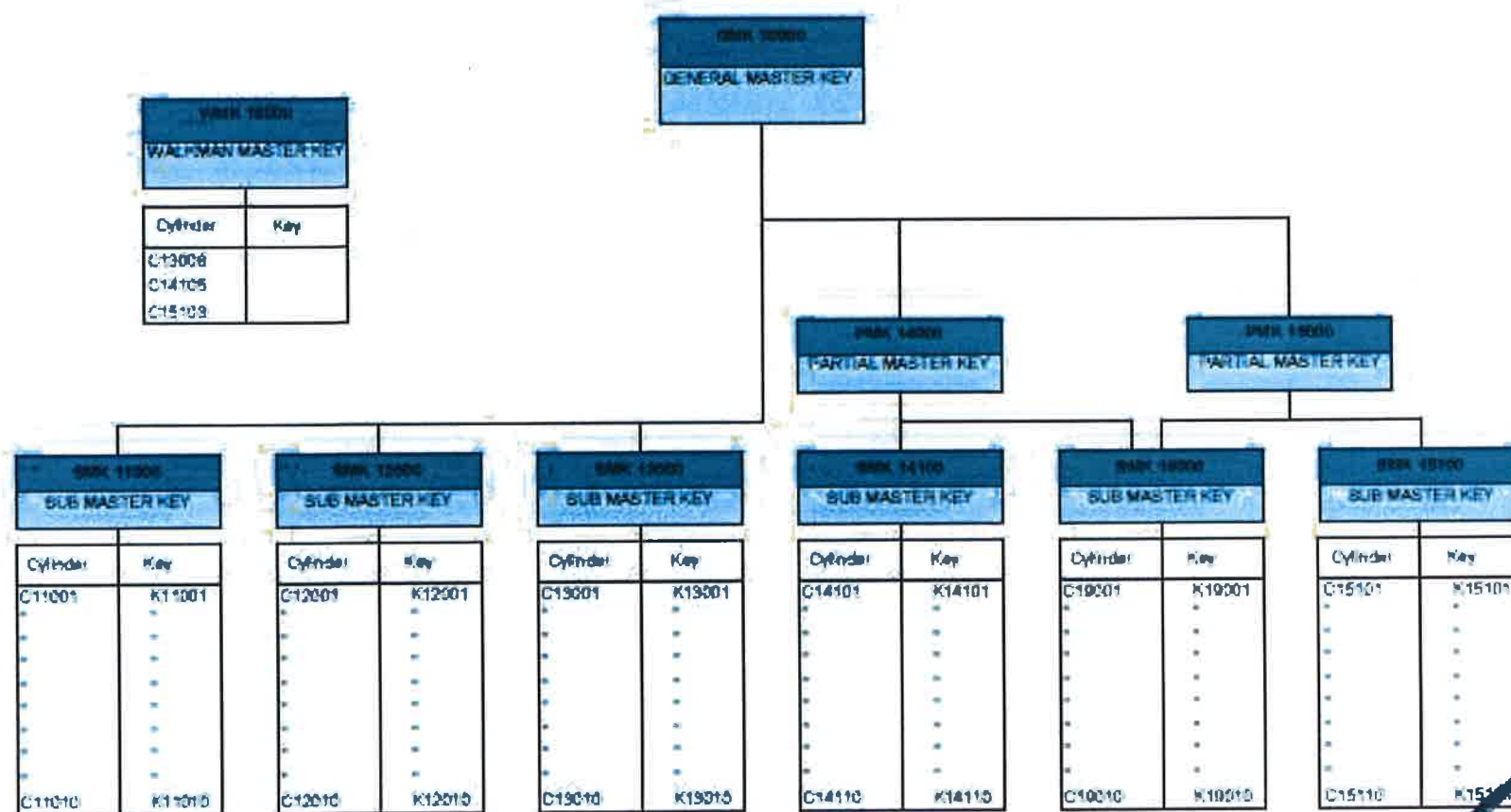
DENY FONTAINE :

Masterkey system: organisation and securisation

- The **masterkey system** has been the **core competence** of Deny Fontaine for the **last 130 years (since 1880)**
- A masterkey system will allow you to **organise the accesses within an organisation** in order to make sure the **only authorised people** will be able to enter the **only authorised premises**
- Dény Fontaine technology is one of the most powerfull on the market in terms of **combinatorial capacity**
- Dény cylinder is a **high security product** and it is appreciated for its **resistance to hard environments (sand, humidity...etc.)** and its **durability**

DENY FONTAINE :

Masterkey system: organisation and securisation



DENY FONTAINE :

Expert of the railway market

- **Rail vehicles locks development** has been one of our specific activities for **more than 30 years**.
- Our team will take into account **every specific requirement** for this type of application during the development.
- **Development** of new products according to **your specifications**.
- **Proactive, we will advise you** on any issue in regards with **access control and securisation**.
- **A dedicated team to the railway market**

DENY FONTAINE :

Expert of the railway market



Nouveau

www.train-denyfontaine.com



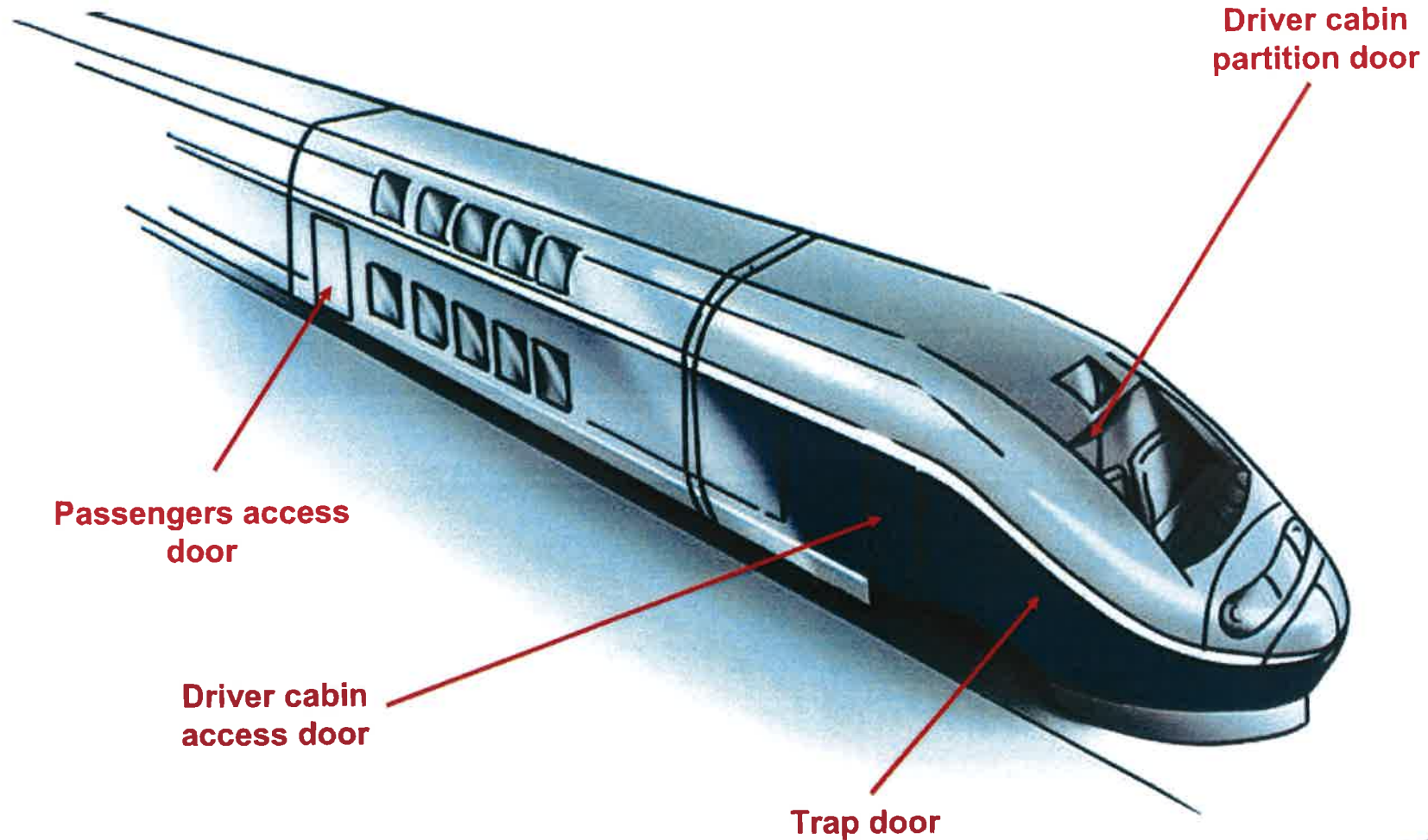
DENY FONTAINE experience on the railway market



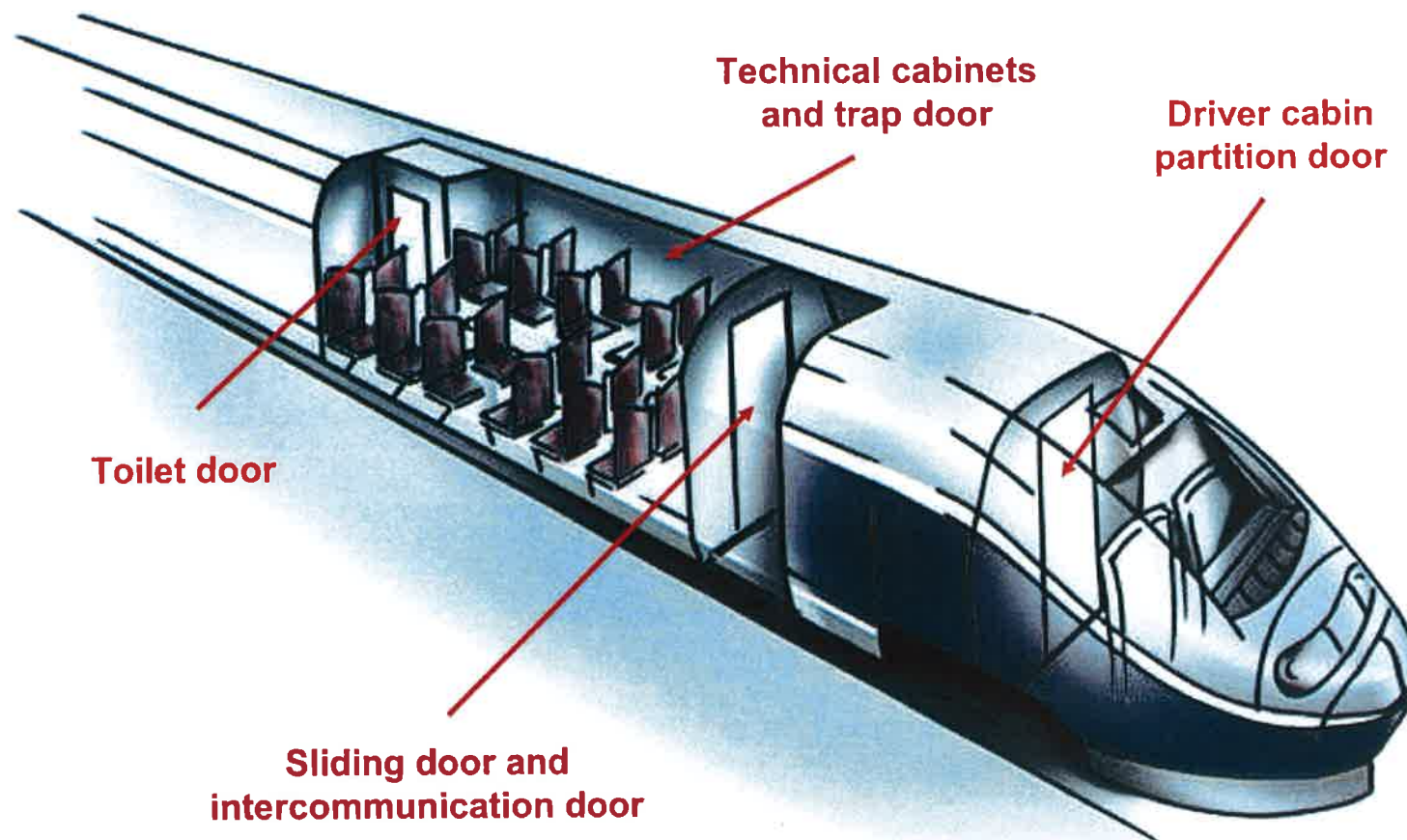
A few references

- TGV Duo
- Train Corail
- TER
- TGV AVE (Espagne)
- TGV Corée
- MI2N
- MI09
- Régiolis
- Régio2N
- RGV

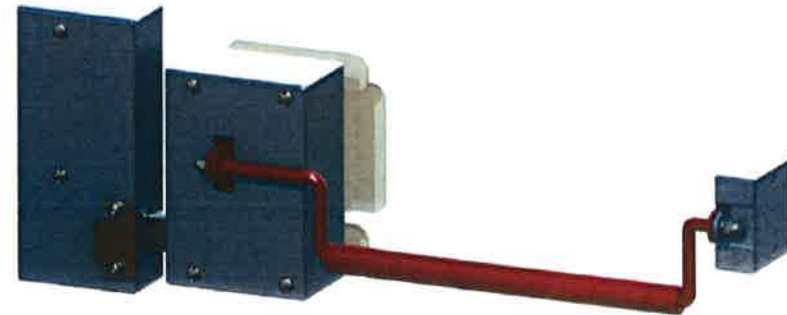
DENY FONTAINE experience on the railway market



DENY FONTAINE experience on the railway market

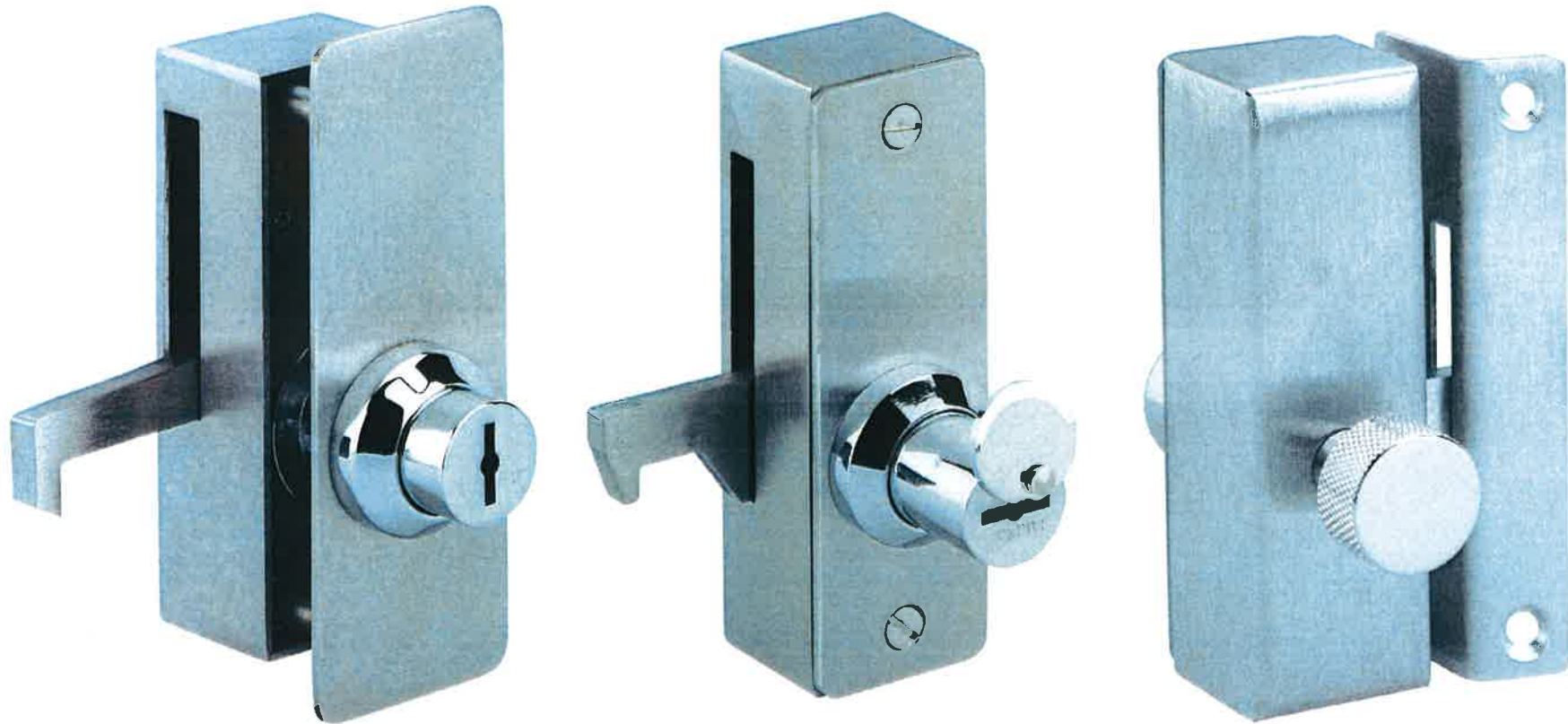


Gamme de produits ferroviaire



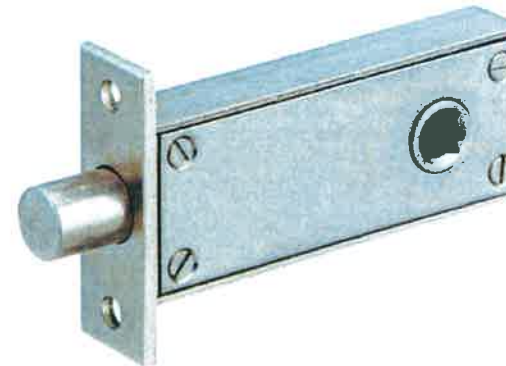
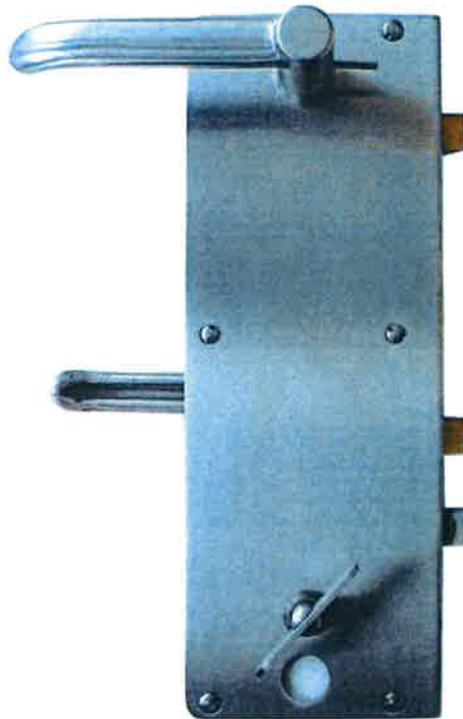
Antipanic locks
Cabin partition door

Locks for rail vehicles



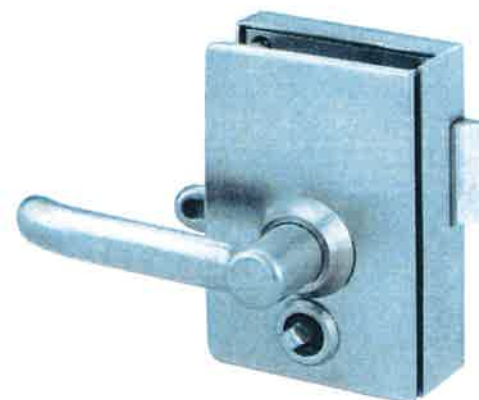
Sliding doors locks
Sliding doors

Locks for rail vehicles



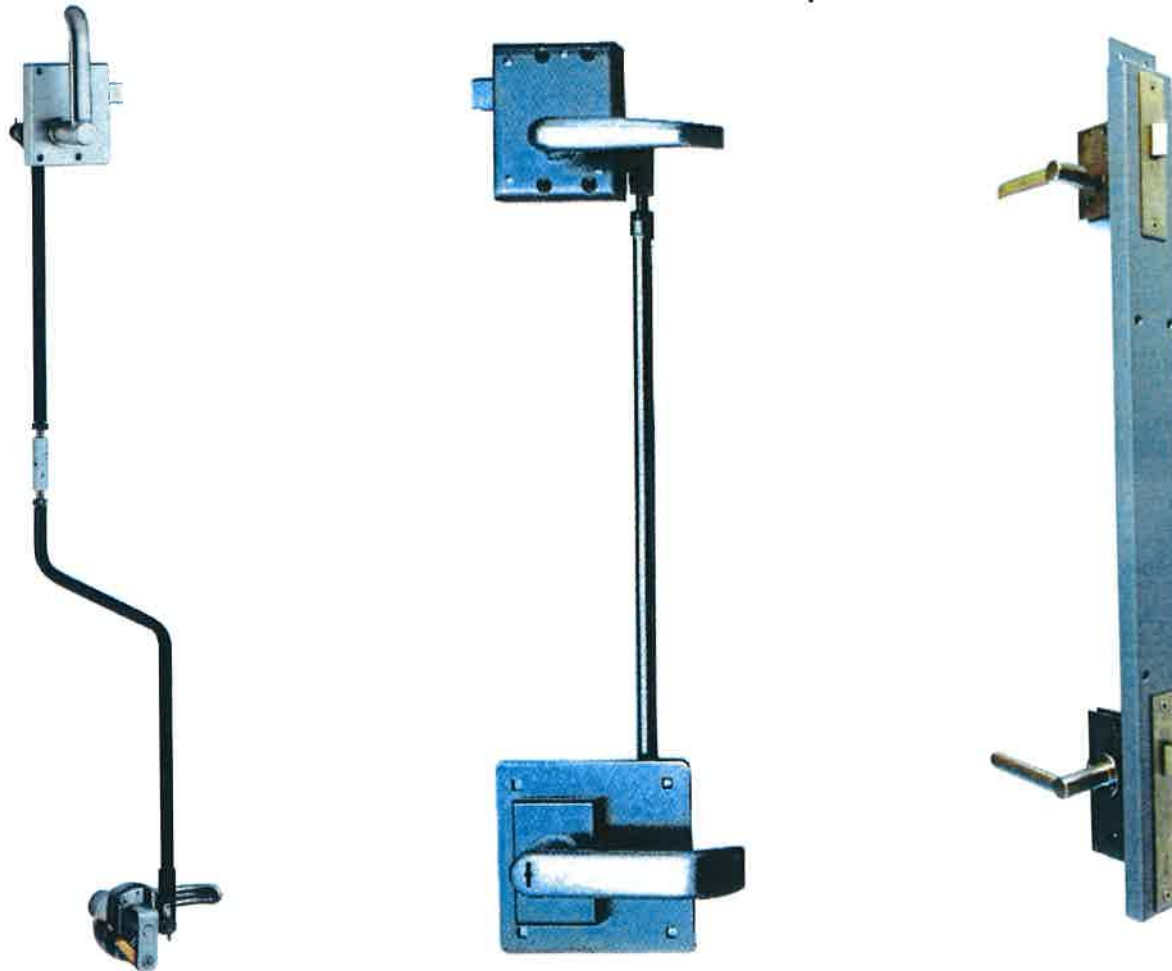
Locks with indicator
Toilet doors

Locks for rail vehicles



Mechanical lock operated by key or square
Cabin partition door

Locks for rail vehicles



Staged locks
Driver cabin access door

Locks for rail vehicles



Mortise lock
Driver cabin access door

Locks for rail vehicles



Lock with button
Passenger access door

Locks for rail vehicles



Trap door lock
Trap doors (outside the train)

Locks for rail vehicles



Quarter-turns and other locking systems
Cabinets and electrical equipments

dény®
F O N T A I N E

dény®
F O N T A I N E

SÉCURIDÉV